

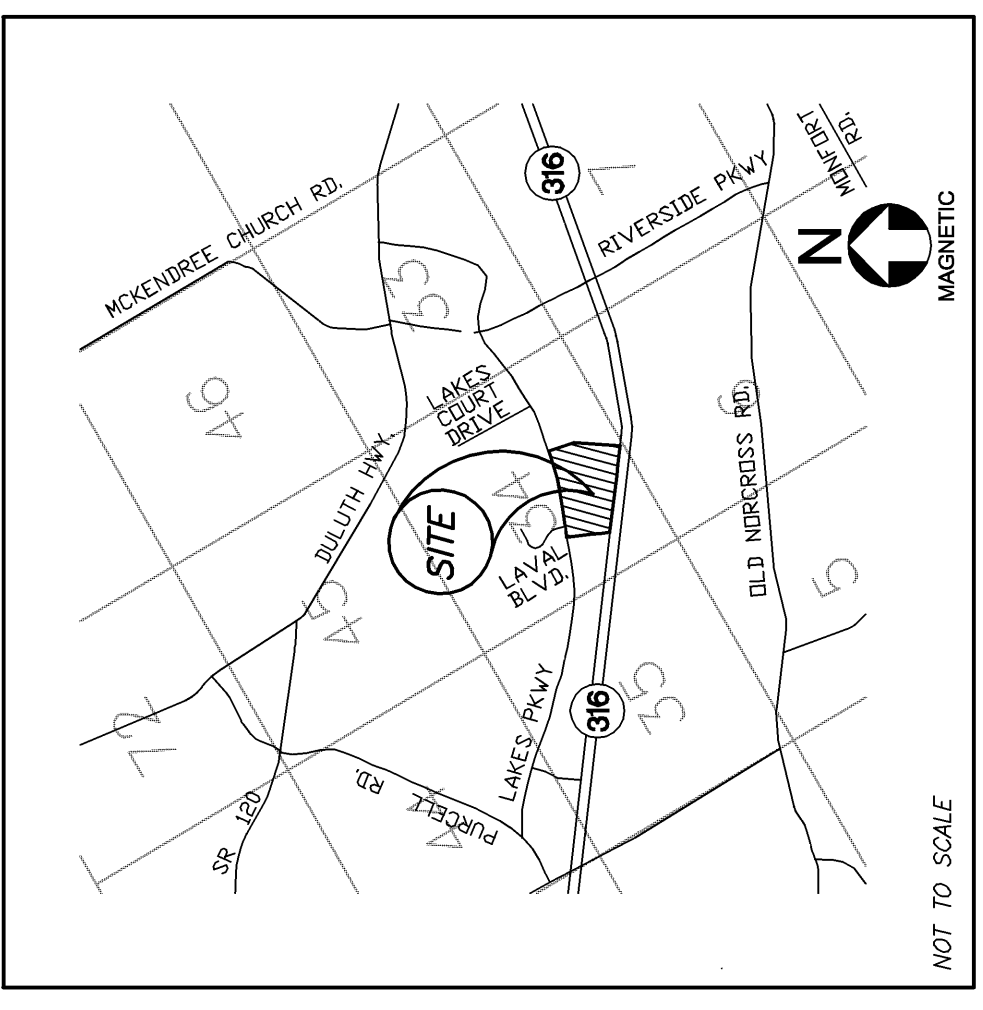
| REVISION DESCRIPTION | DATE |
|----------------------|------|
|                      |      |
|                      |      |
|                      |      |
|                      |      |
|                      |      |
|                      |      |
|                      |      |
|                      |      |
|                      |      |
|                      |      |
|                      |      |

PROJECT NAME:  
 1350 LAKES  
 PARKWAY @  
 CORPORATE LAKES  
 OFFICE PARK

Permit No. 7-34-001  
 and 7-34-242  
 L.L.C. 34th District  
 Gwinnett County, Ga.

SHEET TITLE:  
**SITE  
 USABILITY  
 PLAN**

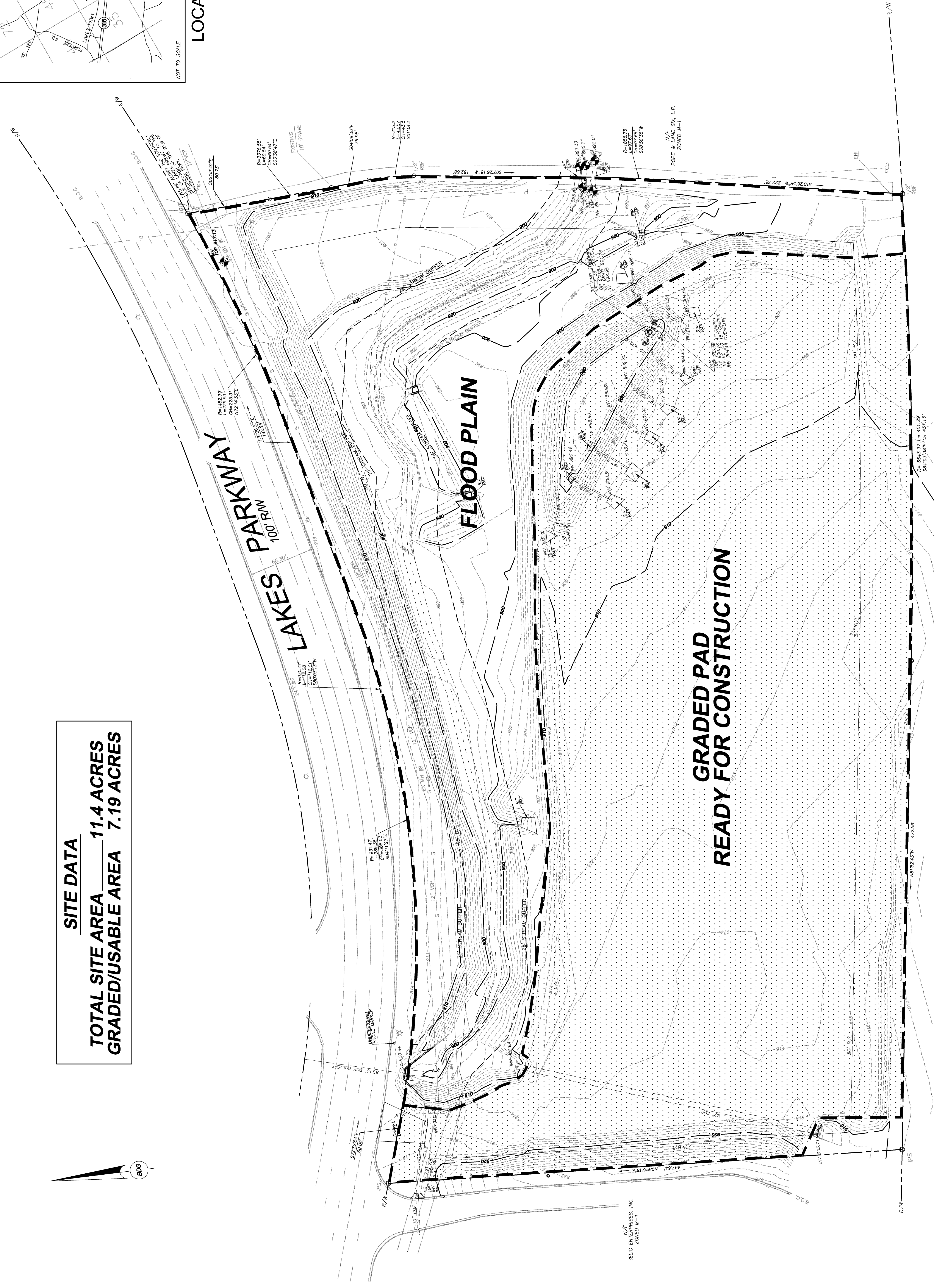
|             |          |
|-------------|----------|
| PROJECT NO. | CRS013   |
| SHEET NO.   | S-1      |
| DATE:       | 07/18/07 |
| ISSUE NO. 1 | of 1     |



**SITE DATA**

TOTAL SITE AREA 11.4 ACRES  
 GRADED/USABLE AREA 7.19 ACRES

**LOCATION MAP**



**GEORGIA HIGHWAY NO. 316 (RW VARIES)**  
 A.K.A. UNIVERSITY PARKWAY

(LIMITED ACCESS)  
 (DEED BOOK 151/PAGE 124)  
 (DEED BOOK 151/PAGE 123)

